



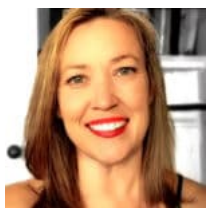
**\$233,000**

## **646 LAURA DR, WINCHESTER, KY 40391, USA**

<https://balrealestate.com>

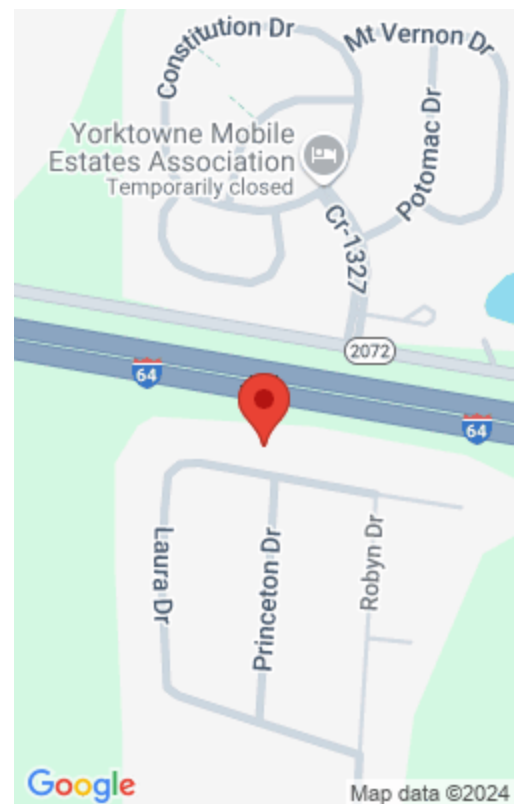
Location, flexibility, and low maintenance living are each a feature of 646 Laura Drive. Located in Verna Hills Subdivision off US 60, 4.7 miles to Winchester, 7.8 miles to Lexington, provides easy access to jobs, schools, and outdoor adventures. One-level floorplan makes for a seamless transition from the living room to the large eat-in kitchen [...]

- 3 beds
- 2.00, 2 baths
- Single Family Residence
- Active
- 1512.00 sq ft



**Laura B Elliott**

Commonwealth Real Estate Professionals



---

## Rooms

---

## Building Details

**Exterior material:** Deck

**Parking:** Driveway

**Roof:** Shingle