



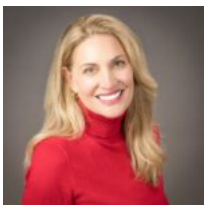
\$509,000

230 SUGARTREE LN, VERSAILLES, KY 40383, USA

<https://balrealestate.com>

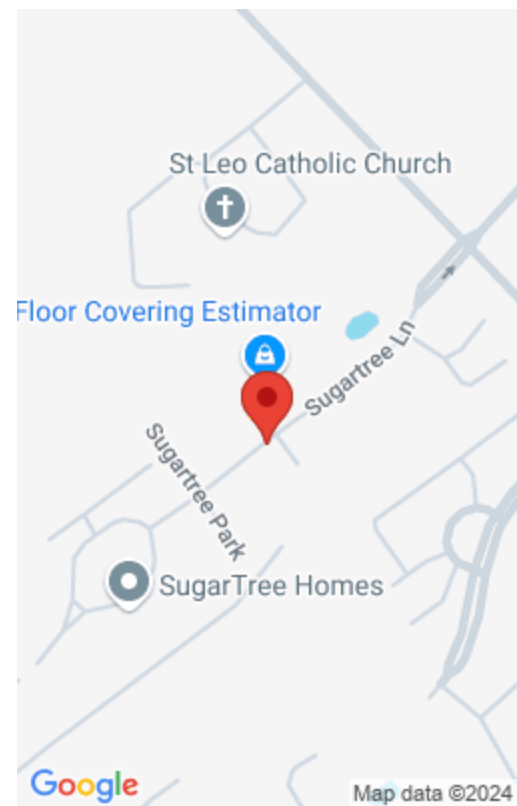
This new construction luxury condominium is perfect for that maintenance-free lifestyle. Located in the heart of Versailles, just moments from Keeneland, multiple golf courses, and Bluegrass Field. With a total of 5 bedrooms and 2.5 baths, this home is perfect for anyone looking for convenient and spacious living. The main floor has a primary ensuite, [...]

- 4 beds
- 3.00, 2 baths
- Condominium
- Active
- 2300.00 sq ft



Denise Patrick

RE/MAX Creative Realty



Rooms

Building Details

Exterior material: Deck, Patio **Roof:** Composition, Dimensional Style, Shingle

Parking: Driveway, Off-street